

550 MAIN STREET

WESTBURY, NEW YORK 11590

FOR SALE | 8,500 SF INDUSTRIAL BUILDING ON OVERSIZED PARCEL

NEW TO MARKET



EXCELLENT LOCATION

PROPERTY HIGHLIGHTS:

BUILDING SIZE:	± 8,513 SF
OFFICE SIZE:	± 1,700 SF
PLOT SIZE:	± 0.80 ACRES
LOADING:	4 OVERSIZED DRIVE-IN DOORS
CEILING HEIGHT:	13'
HEAT:	OIL
SEWERS:	YES
SPRINKLERED:	NO
POWER:	AMPLE
PARKING:	ABUNDANT
TOWN:	NORTH HEMPSTEAD
PARCEL ID:	SECTION 11, BLOCK 72, LOTS 1-3, 5, 10-12, 63-68
ZONING:	INDUSTRIAL B (I-B)
REAL ESTATE TAXES:	\$37,196.09
ASKING SALE PRICE:	\$3,850,000



NOTE: HUGE EXTRA PARCEL INCLUDED
WITH STREET TO STREET FRONTAGE

FOR MORE INFORMATION CONTACT EXCLUSIVE BROKER:

Jason Miller, Managing Principal | 516-413-1690 | jmiller@pcrellc.com
Jeff Schwartzberg, Managing Principal | 516-857-8013 | jbs@pcrellc.com

PREMIER COMMERCIAL RE LLC

1670 Old Country Road., Ste. 219

Plainview, NY 11803

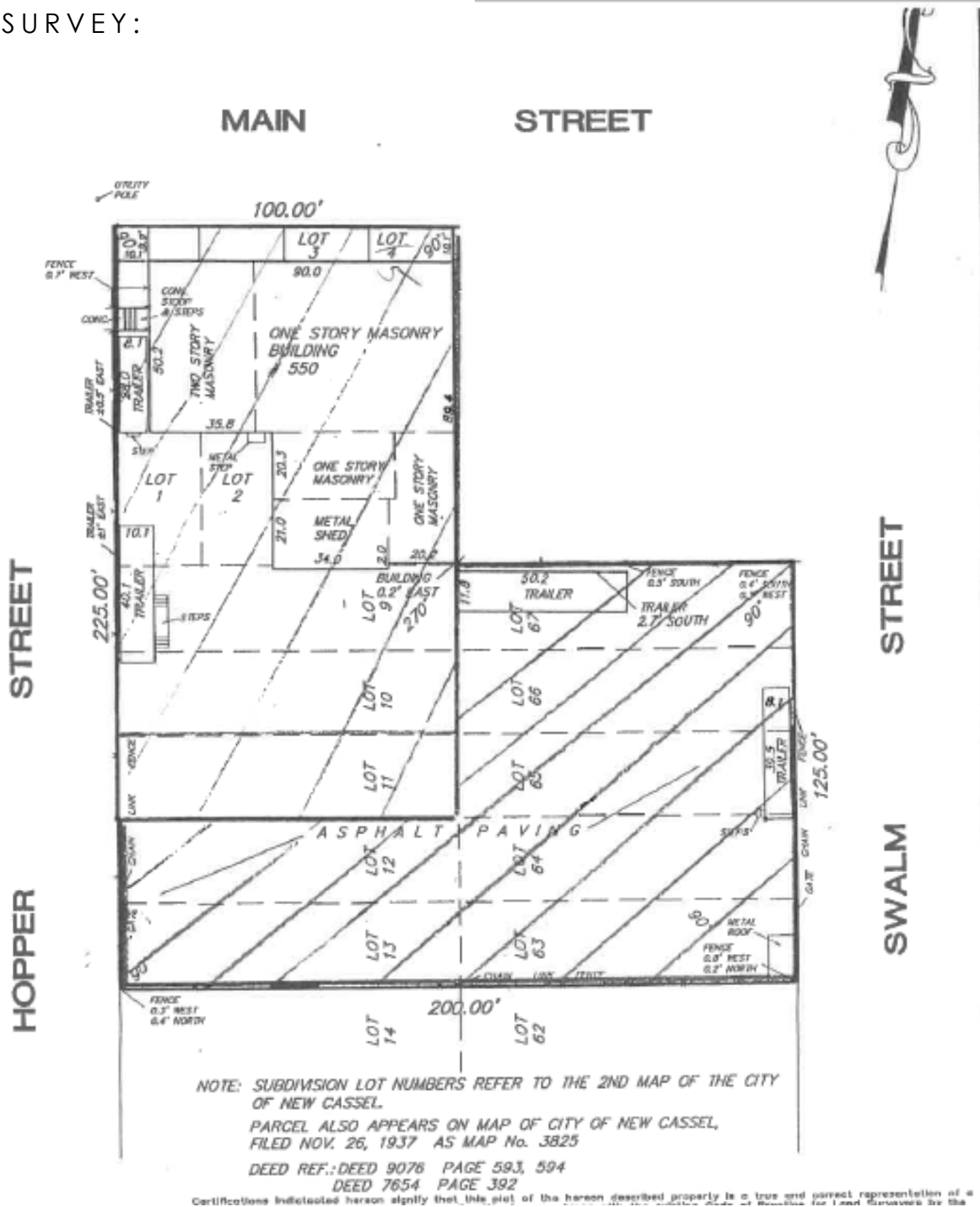
Tel. (516) 284-8000 | www.pcrellc.com

550 MAIN STREET

WESTBURY, NEW YORK 11590

FOR SALE | 8,500 SF INDUSTRIAL BUILDING ON OVERSIZED PARCEL

SURVEY:



EXCELLENT LOCATION

FOR MORE INFORMATION CONTACT EXCLUSIVE BROKER:

Jason Miller, Managing Principal | 516-413-1690 | jmill@pcrellc.com
 Jeff Schwartzberg, Managing Principal | 516-857-8013 | jbs@pcrellc.com

PREMIER COMMERCIAL RE LLC
 1670 Old Country Road., Ste. 219
 Plainview, NY 11803
 Tel. (516) 284-8000 | www.pcrellc.com