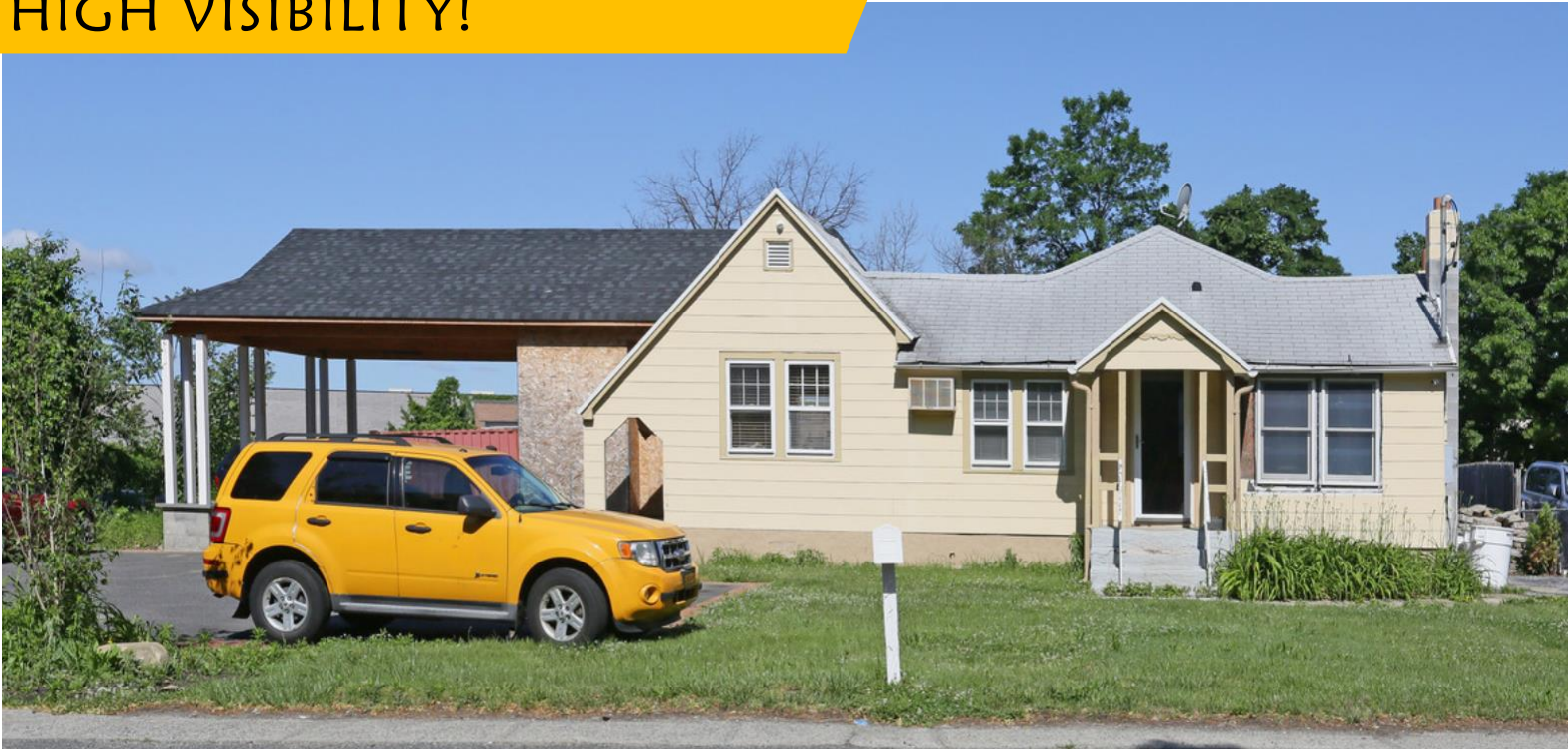


# 2100 JOSHUAS PATH

HAUPPAUGE, NEW YORK

FOR SALE | OFFICE BUILDING

**HIGH VISIBILITY!**



## PROPERTY SPECIFICATIONS:

Building Size:	± 1,100 SF
Lot Size:	± 0.43 Acres
Parking:	Adequate
Zoning:	L1 (Light Industrial)
Parcel ID:	Section 54, Block 1, Lot 4
Real Estate Taxes:	\$7,594.35
Asking Sale Price:	\$575,000

## PROPERTY HIGHLIGHTS:

- High visibility and high traffic of ± 11,788 cars per day on Joshuas Path
- Ideal for a contractor, attorney, engineer, architects or insurance company.
- Immediate access to LIE Exit 56 & Motor Parkway

All information is from sources deemed reliable and is provided subject to errors, omissions, change of price or other terms and conditions, prior to sale, lease, or withdrawal without notice. Such information may not have been verified and no express representation is hereby made

FOR INFORMATION CONTACT EXCLUSIVE BROKERS:

Jeffrey Schwartzberg, Managing Principal | [jbs@pcrellc.com](mailto:jbs@pcrellc.com) | 516-857-8013  
Jason Miller, Managing Principal | [jmiller@pcrellc.com](mailto:jmiller@pcrellc.com) | 516-413-1460

**PREMIER COMMERCIAL RE LLC**

500 North Broadway, Ste. 105

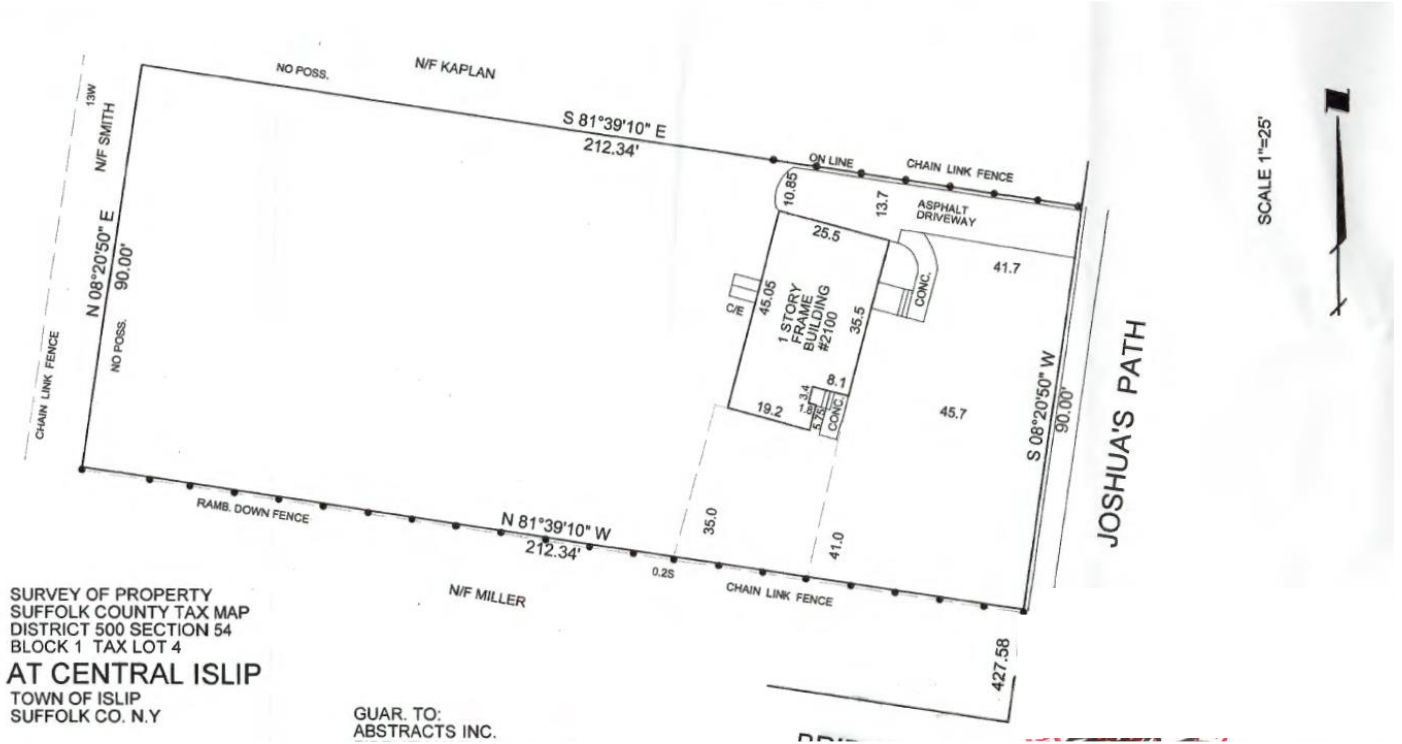
Jericho, NY 11753

Tel. 516-284-8000 | [www.pcrellc.com](http://www.pcrellc.com)

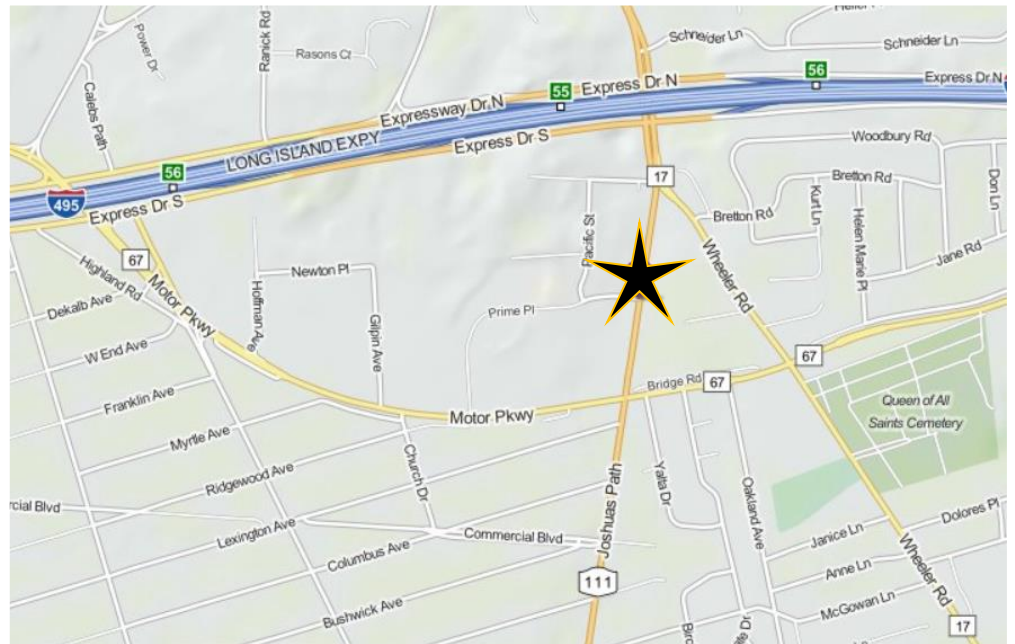
# 2100 JOSHUA'S PATH

HAUPPAUGE, NEW YORK  
FOR SALE | OFFICE BUILDING

PROPERTY SURVEY:



PROPERTY MAP:



FOR INFORMATION CONTACT EXCLUSIVE BROKERS:

Jeffrey Schwartzberg, Managing Principal | [jbs@pcrellc.com](mailto:jbs@pcrellc.com) | 516-857-8013  
Jason Miller, Managing Principal | [jmiller@pcrellc.com](mailto:jmiller@pcrellc.com) | 516-413-1460

**PREMIER COMMERCIAL RE LLC**

500 North Broadway, Ste. 105  
Jericho, NY 11753  
Tel. 516-284-8000 | [www.pcrellc.com](http://www.pcrellc.com)